

Technical Information Package



THE CENTER

FOR THE ARTS

UNIVERSITY AT BUFFALO

Table of Contents

SECTION ONE: GENERAL INFORMATION	3
SECTION TWO: MAIN STAGE	4
STAGE HOUSE.....	5
ELECTRICS	6
SOUND.....	7
MAINSTAGE LINESET SCHEDULE	9
MAINSTAGE DRAWING	11
MAINSTAGE CENTERLINE	12
SECTION THREE: DRAMA THEATER.....	13
STAGE HOUSE.....	14
ELECTRICS	15
SOUND.....	16
DRAMA THEATER LINESET SCHEDULE	18
DRAMA THEATER DRAWING.....	19
SECTION FOUR: BLACK BOX THEATER.....	20
STAGE INFO	20
ELECTRICS	21
SOUND.....	21
BLACK BOX DRAWING.....	22
SECTION FIVE: SCREENING ROOM	23
SECTION SIX: DRESSING ROOMS, LAUNDRY, GREEN ROOMS, PRODUCTION OFFICES.....	24
SECTION SEVEN: SAFETY	26

SECTION ONE: GENERAL INFORMATION

ADDRESS: 103 Center for the Arts
Buffalo, NY 14260-6000

LOADING DOCK GPS COORDINATES: +43° 0' 3.60", -78° 46' 55.20"

TELEPHONE NUMBERS:

Administrative Offices	716.645.6259
Box Office	716.645.ARTS
Production Office	716.645.6926
FAX	716.645.6973

WEB PAGE: www.ubcfa.org

SEATING CAPACITY:

Main Stage Orchestra	1106
Main Stage Balcony	<u>642</u>
	1748
Drama Theater	388
Black Box (maximum)	185
Screening Room	210

SECTION TWO: MAIN STAGE

BASIC SOUND AND LIGHTS - DEFINITION

As referenced in the Center's Rental Agreement, most rental packages include "basic sound and lights". The following are definitions of these terms as they pertain to the Main Stage. Please use these guidelines in planning your event. Contact the Center for the Arts Production Office for details or if you have any questions.

MAIN STAGE SOUND:

Basic sound in this space includes all of the permanently mounted or assigned equipment located in the space. Included is a 48-channel Yamaha M7CL digital mixing console, booth monitors, stereo main house speakers with center cluster and other fill speakers as required for complete house coverage; equalization, compression, and delay for each speaker group, and additional patchable equalizers. There is also an infrared listening system for the hearing impaired, program/paging to dressing rooms and common areas, and playback capability for cassettes, CDs, MiniDiscs and i-Pods. A basic compliment of up to 8 wired microphones is also included. Wireless microphones are available at an additional cost. Two onstage monitor speakers (EAW JF-200 with stands or fly hardware) are included. The mix for these monitors is sent from the house console. Other types of monitor speakers or an onstage monitor system are available at additional cost.

The permanently installed speakers in the space consist of 2 bi-amped EAW KF300i speakers per side for the orchestra level, and 1 per side for the balcony. There is a single Bag End Duel 18 portable subwoofer on each side of the proscenium that can be removed if needed. The center cluster consists of 2 bi-amped KF300i's flanking an SB300 for both the orchestra and balcony level. There are 8 low-level front fill EAW L8CX2XO speakers built into the pit wall for lower orchestra front fill, and 3 EAW UB42 speakers cover the under-balcony as delayed fills. The upper balcony has 3 passive KF300i speakers for delayed fills.

The sound system in this space is designed primarily for theatrical sound reinforcement. Consequently, it is not always suitable for concert level amplification. An EAW KF730 line array concert level system is available for rental from the Center at an additional charge. The Center's production department will work with you to ensure you will have everything needed for a successful event. If this includes equipment above and beyond our basic inventory, we will also help procure those items. Please do not hesitate to call with questions.

MAIN STAGE LIGHTING:

The Main Stage lighting system has an ETC EOS lighting console with three 20-fader universal fader wings. The system is dimmer per circuit. This board is capable of doing multi-part, timed cues, as well as controlling intelligent lighting fixtures. The EOS can import USITT ASCII which can be generated by Obsession II and Expression offline, as well as many other manufacturers' consoles. A client station with 2 displays is available for use at a mid-house tech table. The EOS is permanently installed in the booth and cannot be moved. Road consoles can be located at the mid-house cross-aisle. Please discuss this with the production manager during the advance as this may cause sight line obstructions for the rear orchestra section.

The permanently hung light plot is designed as a theatrical/dance plot, and may be used at no charge when basic lighting is included in the rental package. Only instruments shown on the lighting plots are included free of charge. Additional instruments as well as follow spots and side lighting booms are available for an additional charge.

The theatrical/dance plot consists of five electrics on stage, as well as 16 2-cell sky cycs and a 4-circuit ground row. Front of House lighting includes two coves, balcony rail positions, house side slots and proscenium ladders. This plot provides a two-color wash from each direction; front, back, and high sides. Front and back light instruments are hung five across and three deep. High side instruments are hung two or three across and four deep. The pit lighting mimics the front and high side systems. All general area lights are pre-focused. If a specific lighting plot is required, focus will take place during rental time. There are 28 instruments available for use as specials, which can be focused as required. The plot is designed to be used at a trim height of 26 to 28 feet.

In compliance with OSHA requirements the moving of genie lifts while raised is prohibited. Please take this into consideration when determining schedule and crew requirements with the Production Manager.

2 pre-rig trusses containing 60 par64 cans each are available for concert lighting at an additional charge. Moving lights, RGB LED fixtures, and various special effects are also available for rental.

Except for the standard cyc lighting colors (red, blue, green, amber), there are no standard colors for the lighting plot. Non-stock color is the responsibility of the user. Please contact us early to ensure that we can accommodate all your lighting needs.

2 Lycian 2K Follow spots are centered at the rear of the balcony. Due to architectural obstructions, they cannot reach into the house past the 1st row in the orchestra section.

STAGE HOUSE

PROSCENIUM OPENING: 47'-9" wide
Adjustable height: 23'-6" minimum; 37'-10" maximum
Standard height 30'-0"

STAGE: 42'-11.5" deep; from plaster line to back wall
5'-6.5" deep apron
106'-4.5" wide; wall to wall
24'-4" wing space stage right
29'-9.5" wing space stage left

Stage floor is sprung 1¼" pine; tongue and groove
Stained dark brown and finished with matte polyurethane.

NO NAILS, SCREWS, OR LAG BOLTS ALLOWED WITHOUT PRIOR CONSENT OF THE CENTER'S PRODUCTION OFFICE.

GRID: Height +78'-8"
Total of 8 channel beams on 10'-0" centers flanking center stage
Full grid begins upstage of line set #5 (limited rigging from #5 to smoke pocket)
PLEASE ADVANCE RIGGING PLOT WITH CENTER'S PRODUCTION OFFICE.

ORCHESTRA PIT: Pit 9'-3½" deep at Center Line
53'-2" wide
Orchestra playing level 7'-6" below stage floor
10' deep under-stage extension at orchestra playing level
Motorized – no one is allowed to ride the lift while it is in motion
Safety Net must be in place when pit is 3' or lower from stage height
Due to lack of access, audience seating in the orchestra pit is not possible

CROSSOVER: 3' crossover area located upstage of blackout drop on line set 69

FLY SYSTEM: 69 total single purchase line sets on ±6" centers
6 lines per set
All general purpose battens (65 total) 52' long; 1½" sch 80 pipe
with integral 4' extensions for each end
1394 lbs max capacity each
Full battens (4 total) 60' long; 1½" sch 80 pipe (#s 1, 2, 68, 69)
Batten low trim - 4'-3"
Batten high trim - 74'-3"
45 linesets available
27 linesets used for house goods
Locking rail located stage right at stage level
Pin rail located stage right and left at +35'; loading 250 lbs./sq.ft.
High loading dock at +73'-2"; loading 600 lbs./sq.ft.
Low loading dock at +64'-10"; loading 600 lbs./sq.ft.
Fire curtain at 0'-4" - MUST BE KEPT CLEAR TO DECK AT ALL TIMES
See lineset schedule for specifics

CURTAINS: 5 borders 50' x 8'
2 borders 60' x 16'
5 pair legs 12' x 40'
2 full stage blacks (2 panels each at 27' x 40') (guillotine only, no travelers)
All blacks are 25 oz. velour, sewn flat with weight and pipe pockets
1 black sharktooth scrim 50' x 40'
1 cyclorama - gray leno - 60% reflectance 50' x 40'

1 Rosco Twin White projection screen 58' x 38'

ACT CURTAIN: Located at 1'-3"
Operated from down stage right - guillotine

LOADING INFO: Main loading door; upstage left back wall
No loading dock – parking lot is at stage level
Trucks must provide appropriate ramp down to stage level
Dimensions: 11'-3"w x 11'-9"h

Loading door #2; stage left- interior of building access only
Dimensions: 12'-1/2"w x 16'-1"h
Stage door to dressing rooms; 3'w x 7'-10"h

ELECTRICS

LIGHT PLOT: Current plot available upon request

COMPANY SWITCH: Three 400 amp 120/208 volt panels stage left
One 200 amp 120/208 volt panel stage right
Each has two sets of sequential Cam-Lok connectors

SHORE POWER: One 100-amp 120/208 volt panel up-stage right

HOUSE LIGHTS: Controllable from stage left and control booth SM positions

STAGE LIGHTS: ETC EOS Console located in booth at rear orchestra level.

Road consoles can be tied into house dimmers and placed backstage, at the mid-house cross-aisle (may require seating kills behind) or center at the back of the house.

There are no permanently circuited electric battens on stage. All onstage electrics are circuited with cable drops from the grid. Each drop contains six 2.4K circuits and terminates with multi-pin connectors. Extensions, break-outs, and fan-outs are available. All instruments and single extension cables have stage pin connectors.

DMX output available at all hanging positions

CABLE DROPS: Stage Left - 25 drops (150 circuits)
Stage Right - 17 drops (102 circuits)
Proscenium Arch - 4 drops (24 circuits)

STAGE CIRCUITS: Downstage Left & Right - 8 2.4K circuits per side
Upstage Left & Right - 8 2.4K circuits per side
Pinrail Stage Left & Right - 30 2.4K circuits per side
Grid - 8 6K circuits
Orchestra Pit - 8 2.4K circuits

BALCONY RAIL: Elevation 24'-6" – approximate throw angle: 17°
Throw to plaster line at center line 82'

28 2.4K circuits

FIRST COVE: Elevation 61' – approximate throw angle: 51°
Throw to plaster line 78'-6"
49' downstage of plaster line
35 2.4K circuits; 4 6K circuits

SECOND COVE: Elevation 70' – approximate throw angle: 39°
Throw to plaster line 111'-6"
86'-6" downstage of plaster line
35 2.4K circuits; 4 6K circuits

SIDE SLOTS: Elevation (low position) 20'-0"
Elevation (high position) 45'-0"
Throw to plaster line at center line 56'
43' left/right of center line
38' downstage of plaster line
12 2.4K circuits per side

PROSCENIUM SLOTS: Elevation (low position) 1'-6"
Elevation (high position) 36' or proscenium trim
Throw to plaster line at center line 29'
29' left/right of center line
3' downstage of plaster line
8 2.4K circuits per side

FOLLOWSPOT BOOTH: 58' elevation
135' throw to plaster line at center line
Two followspots (Space available for 3)

SOUND

MIXING LOCATION: Control booth rear orchestra center (house system); Road consoles can be located either orchestra center at rear (26'x 6') or at mid-house cross-aisle (26'x6' – normally requires seating kills in section behind aisle). Audio tie lines are available at both locations. Cable run from stage to rear orchestra is approximately 180 feet.

PAGING SYSTEM: Paging available to dressing rooms and common areas from stage left and rear orchestra control booth.

PROGRAM: Program available to dressing rooms and common areas.

COMMUNICATION: Four channels of Clear-Com available to all Main Stage areas. There are an additional two channels available to all CFA areas. 8 single-channel headsets are standard theater equipment; 4 wireless headsets are available for an additional charge.

VIDEO: Two cameras are permanently mounted at center on the balcony rail (one color and one infrared) feeding video to booths, stage, and house locations. Color camera also feeds CATV system wired to all CFA production areas. Permanently installed analog composite video lines located on stage, in control booths, at mid-house cross-aisle, in orchestra pit, and at FOH lighting positions route through video patch bay in main communications room.

SUPPORT SPACES

DRESSING ROOMS: All rooms are located at stage level, accessible from corridor downstage left. Total of 7 rooms can accommodate up to 69 people. All rooms have tables, chairs, mirrors, toilet and shower facilities, and sinks with hot and cold water.

Touring production office (1) located at stage level.

WARDROBE: Laundry room with washer/dryer, ironing board, iron, sewing machine, and steamer available.

Dressing rooms, production offices, and wardrobe spaces are common areas. Usage will be determined by the Center's Production Manager. See Section Six for specifics details.

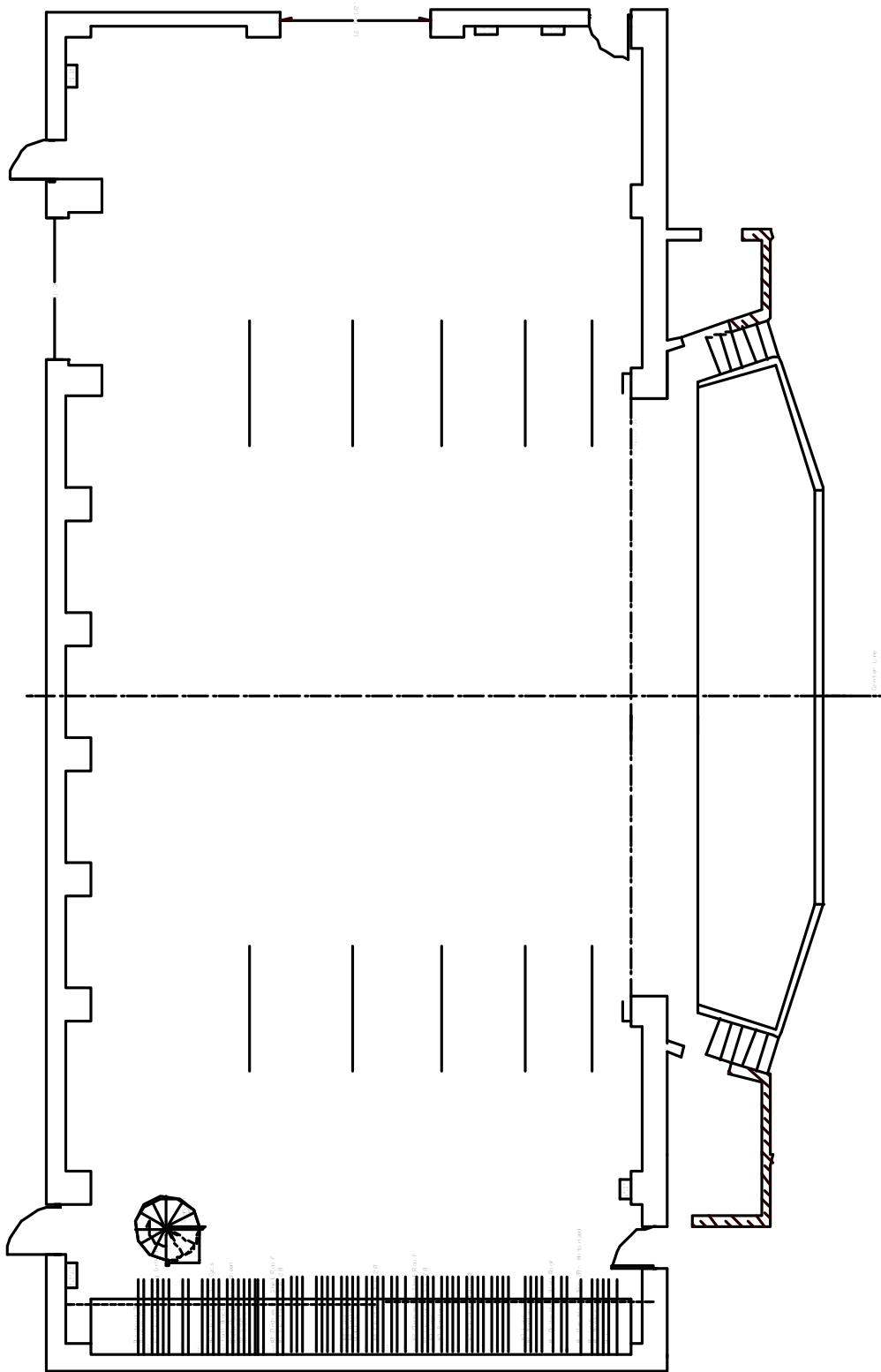
MAIN STAGE LINESET SCHEDULE

Line	D.F.P.	Capacity	Standard House Plot	Notes
1	0'-9"	1394#		not available when MAIN is used
2	1'-3"	1394#	Main Curtain	permanent
3	1'-9"	1394#		Not available when MAIN is used
4	2'-3"	1394#	1st Border	
5	2'-9"	1394#	1st Legs	
6	3'-9"	1394#	1st Electric	Permanent - motorized winch – double batten
7	5'-3"	1394#		
8	5'-9"	1394#		
9	6'-3"	1394#		
10	6'-9"	1394#		
11	7'-3"	1394#		
12	7'-9"	1394#	2nd Border	
13	8'-3"	1394#	2nd Legs	
14	9'-9"	1394#		
15	10'-3"	1394#		
16	10'-9"	1394#		
17	11'-3"	1394#		
18	11'-9"	1394#		
19	12'-3"	1394#		
20	12'-9"	1394#	2nd Electric	Permanent – double batten
21	13'-3"	1394#		
22	13'-9"	1394#		
23	14'-3"	1394#		
24	14'-9"	1394#		
25	15'-3"	1394#	3rd Border	
26	15'-9"	1394#	3rd Legs	
27	16'-3"	1394#	3rd Electric	Permanent – double batten
28	16'-9"	1394#		
29	17'-3"	1394#		
30	17'-9"	1394#		
31	18'-9"	1394#		
32	19'-3"	1394#		
33	19'-9"	1394#		
34	20'-3"	1394#	4th Electric	Permanent – double batten
35	20'-9"	1394#		
36	21'-3"	1394#		
37	21'-9"	1394#	Mid-black	Split – overlap at center
38	22'-3"	1394#	4th Border	
39	22'-9"	1394#	4th Legs	
40	23'-3"	1394#		
41	23'-9"	1394#		
42	24'-3"	1394#		
43	24'-9"	1394#		
44	25'-3"	1394#		
45	25'-9"	1394#		
46	26'-3"	1394#		
47	26'-9"	1394#		
48	27'-9"	1394#	5th Electric	Permanent – double batten
49	28'-3"	1394#		
50	28'-9"	1394#		

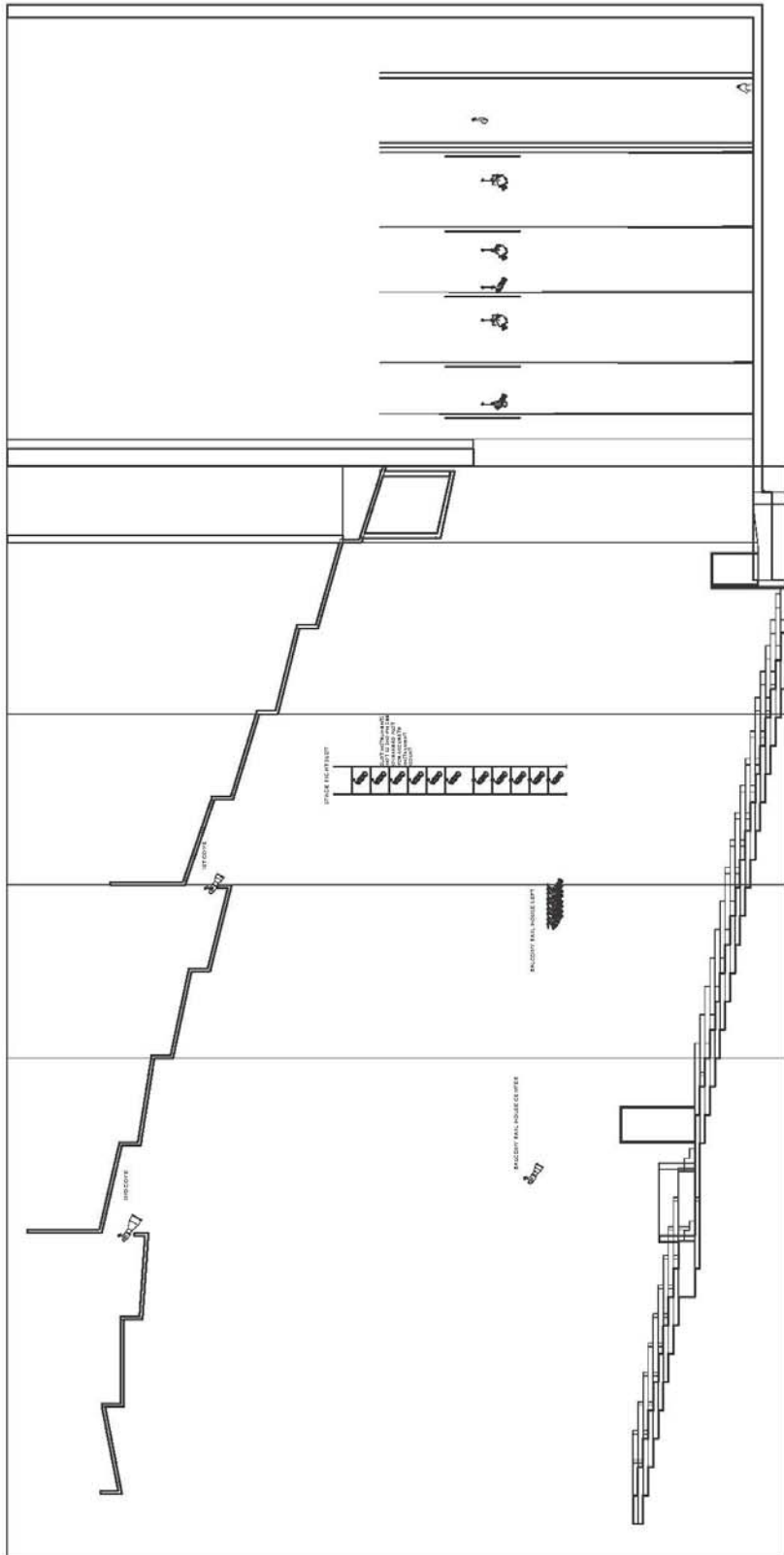
Line	D.F.P.	Capacity	Standard House Plot	Notes
51	29'-3"	1394#		
52	29'-9"	1394#		
53	30'-3"	1394#	5th Border	
54	30'-9"	1394#	5th legs	
55	31'-3"	1394#	Scrim	Permanent
56	31'-9"	1394#	RP Screen	Permanent
57	32'-3"	1394#	Split Black	Split – overlap at center
58	32'-9"	1394#		
59	33'-3"	1394#		
60	33'-9"	1394#		
61	34'-3"	1394#	Sky Cycs	Permanent
62	35'-3"	1394#		
63	35'-9"	1394#		
64	36'-9"	1394#		
65	37'-3"	1394#		
66	37'-9"	1394#	Flying Groundrow	Permanent
67	38'-3"	1394#		
68	38'-9"	1394#	White Cyc	Permanent
69	39'-3"	1394#	Blackout	Permanent

MAIN STAGE DRAWINGS

STAGE



CENTERLINE SECTION



SECTION THREE: DRAMA THEATER

BASIC SOUND AND LIGHTS - DEFINITION

As referenced in the Center's Rental Agreement, most rental packages include "basic sound and lights". The following are definitions of these terms as they pertain to the Drama Theater. Please use these guidelines in planning your event. Contact the Center for the Arts Production Office for details or if you have any questions.

DRAMA THEATER SOUND:

Basic sound in this space includes all of the permanently mounted or assigned equipment located in the space. Included is a 48-channel Yamaha M7CL digital mixing console, booth monitors, stereo main house speakers with center cluster and pit fill speakers as required for complete house coverage; equalization, compression, and delay for each speaker group. There is an EAW JF100 FX speaker located in both rear corners of the house. There is also program/paging to dressing rooms and common areas, and playback capability for CDs and iPods. A basic compliment of up to 8 wired microphones is also included. Wireless microphones are available at an additional cost. Two onstage monitor speakers (EAW JF-200 with stands or fly hardware) are included. The mix for these monitors is sent from the house console. Other types of monitor speakers or an onstage monitor system are available for an additional charge.

The house speaker system consists of 2 bi-amped KF300i speakers and a Bag End S18 sub-woofer per side. The center cluster consists of 2 bi-amped KF300i speakers.

The sound system in this space is primarily designed as a theatrical sound reinforcement system. Therefore, it is generally not suitable for concert level amplification. The Center's production department will work with you to ensure you have everything needed for a successful event. If this includes equipment above and beyond our basic inventory, we will help procure those items. Please do not hesitate to call with questions.

DRAMA THEATER LIGHTING:

The Drama Theater has an ETC Ion lighting console with two 20 fader wings. The system is dimmer per circuit. A remote video station with 2 displays is available for use at a mid-house tech table.

The plot in this space is a theatrical/dance plot consisting of four electrics on stage and three front-of-house coves, as well as 14 2-cell sky cycs and a 4-circuit ground row. When basic lighting is included in the rental package, only instruments shown on the lighting plot are included free of charge. Additional instruments as well as followspots and side lighting booms are available for an additional charge.

This plot provides a two color wash from the front, back and high sides. Front and back light instruments are hung five across and three deep. High side instruments are hung two across and three deep. The pit lighting mimics the front and high side systems upstage of the proscenium. All general area lights are pre-focused. There are additional instruments available overhead and front of house for use as specials, which can be focused as required. The plot is designed to be used at a trim height of 26 to 28 feet.

In compliance with OSHA requirements the moving of genie lifts while raised is prohibited. Please take this into consideration when determining schedule and crew requirements with the Production Manager.

Except for the standard cyc lighting colors (red, blue, green, amber), non-stock color for the lighting plot is the responsibility of the user. Please contact us early to ensure that we can accommodate all your lighting needs.

Two followspots, flanking center in the 3rd cove, are available at an additional cost.

STAGE HOUSE

PROSCENIUM OPENING: 35'-0" wide minimum, 45'-3" wide maximum - adjustable
32'-0" height

STAGE: 34'-8" deep from plaster line to back wall
3'-0" deep apron
68'-11" wide wall to wall
11'-10" wing space stage right
7'-1" wing space stage left
Stage floor is sprung - 1¼" pine, tongue and groove
Stage floor is covered with ¼" tempered masonite

NO NAILS, SCREWS, OR LAG BOLTS ALLOWED WITHOUT PRIOR CONSENT OF THE CENTER'S PRODUCTION OFFICE.

TRAPS: Stage is fully trapped
Total of 56 3' x 6' sections from 4' to 24' upstage of plaster line and 21' left and right of center
Trap space elevation is 11'
Please advance with production office as ample notice is required for use of traps

GRID: Height +69'-10"

ORCHESTRA PIT: 10'-9" deep at Center Line
45'-6" wide
Orchestra playing level 7'-6" below stage floor
5'-6" deep under-stage extension at orchestra playing level
Motorized – no one is allowed to ride the lift while it is in motion
Safety Net must be in place when pit is greater than 3' from stage height
Due to lack of access, Orchestra Pit seating is not possible

CROSSOVER: 3' crossover area located upstage of blackout drop on lineset 43

FLY SYSTEM: 43 total single purchase line sets
7 lines per set
All general purpose battens 48"-0" long; 1½" sch 80 pipe
1301 lbs max capacity each
Batten low trim - +4'-0"
Batten high trim - +65'-6"
21 line sets available
22 line sets used for house goods
Locking rail located stage left at stage level
Pin rail located stage right and left at +32'-0"
Loading dock at +64'-10"
Fire curtain at +0'-3" - MUST BE KEPT CLEAR TO DECK AT ALL TIMES
See line plot for specifics

CURTAINS: 4 borders 50' x 8'
1 border 50' x 16'
3 pair legs 12' x 34'
2 pair legs 8' X 34'
2 full stage blacks (2 panels each at 28' x 34')
All blacks are 25 oz. velour, sewn flat with weight and pipe pockets
1 black sharktooth scrim 50' x 34'
1 cyclorama - gray leno - 60% reflectance 50' x 34'

1 Rosco Twin White projection screen 46' x 34'

ACT CURTAIN: Located at 1'-4"
Operated from downstage left - guillotine

LOADING INFO: Loading door; upstage left back wall at stage level
Dimensions: 12'-0"w x 15'-10"h
Loading door access through scene shop
Stage door to dressing rooms - upstage left: 2'-10"w x 8'-0"h
Stage door to dressing rooms - downstage right: 2'-10"w x 8'-0"h

ELECTRICS

LIGHT PLOT: Current plot available upon request

COMPANY SWITCH: Two 400 amp 120/208 volt panels stage right
One 200 amp 120/208 volt panel stage right
Each has two sets of sequential Cam-Lok connectors

HOUSE LIGHTS: Controlled from stage right and control booth SM positions

STAGE LIGHTS: ETC Ion located in booth at rear orchestra level

There are no permanently circuited electric battens on stage. All onstage electrics are circuited with cable drops from the grid. Each drop contains six 2.4K circuits and terminates with multi-pin connectors. Extensions, break-outs, and fan-outs are available.

All connectors are 20-amp stage pins.

DMX out 513-1024 available at all lighting positions

CABLE DROPS: Stage Left: 12 drops (72 circuits)
Stage Right: 20 drops (120 circuits)

STAGE CIRCUITS: Downstage Left & Right: 8 2.4K circuits per side
Upstage Left & Right: 8 2.4K circuits per side
Pinrail Stage Left & Right: 24 2.4K circuits per side
Grid: 8 6K circuits
Orchestra Pit: 8 2.4K circuits
Trap Space: 4 2.4K circuits
Apron Grid: 8 2.4K circuits

FIRST CATWALK: Elevation (walking surface): +33'-8"
Throw to plaster line: 39'
18'-6" downstage of plaster line at center line
32 2.4K circuits; 4 6K circuits

SECOND CATWALK: Elevation (walking surface): +31'-0"
Throw to plaster line: 48'
35'-6" downstage of plaster line at center line
32 2.4K circuits; 4 6K circuits

- THIRD CATWALK:** Elevation (walking surface): 29'-0"
 Throw to plaster line: 62'
 54'-0" downstage of plaster line at center line
 32 2.4 K circuits; 4 6K circuits
 2 Follow spots flanking center
- SPOT BOOTHS:** Elevation: +19'-6"
 66' throw to plaster line at center line
 24' left and right of center line
 One followspot location in each booth
 Standard followspot position is the third catwalk
- PROSCENIUM
 LADDERS:** Nine pipes 7'-4" long on 32" vertical centers
 Elevation (low position): +3'-6"
 Elevation (high position): +24'-10"
 Throw to plaster line at center line: 32'
 29' left and right of center line
 7' downstage of plaster line
 8 2.4K circuits per side
- VOM ENTRANCES:** 2 2.4K circuits per side

SOUND

- MIXING LOCATION:** Control booth located at rear orchestra center.
- PAGING SYSTEM:** Paging is available to dressing rooms and common areas from stage right and control booth via stage manager's consoles.
- PROGRAM:** Program is available to dressing rooms and common areas.
- COMMUNICATION:** Four channels of Clear-Com available to all Drama Theater areas. Additional two channels available to all CFA areas.
- VIDEO:** Two cameras are permanently mounted (one color at control booth and one infrared in second catwalk) feeding video to booths, stage, and house locations. Color camera also feeds CATV system wired to all CFA production areas. Permanently installed analog composite video lines located on stage, at vomitory entrances, in orchestra pit, and in trap space route through video patch bay in booth.

SUPPORT SPACES

DRESSING ROOMS: All rooms located at stage level, accessible from corridor downstage left
Total of 7 rooms can accommodate up to 69 people
All rooms have tables, chairs, mirrors, toilet and shower facilities, and sinks with hot and cold water.

Touring production office (1) located at stage level.

WARDROBE: Laundry room with washer/dryer, ironing board, iron, sewing machine, and steamer available.

Dressing rooms, production office, and wardrobe spaces are common areas. Usage will be determined by the Center's Production Manager. See Section Six for specifics.

DRAMA THEATER LINESET SCHEDULE

Line	D.F.P.	Capacity	Standard House Plot
1	0'-8"	1301#	Main Teaser
2	1'-4"	1301#	Main Drape
3	2'-8"	1301#	1st Border
4	3'-4"	1301#	1st Legs
5	4'-0"	1301#	1st Electric
6	4'-8"	1301#	
7	5'-4"	1301#	
8	6'-0"	1301#	
9	6'-8"	1301#	2nd Border
10	7'-4"	1301#	2nd Legs
11	8'-8"	1301#	
12	9'-4"	1301#	2nd Electric
13	10'-0"	1301#	
14	10'-8"	1301#	
15	11'-4"	1301#	3rd Border
16	12'-0"	1301#	3rd Legs
17	12'-8"	1301#	
18	13'-4"	1301#	
19	14'-0"	1301#	
20	14'-8"	1301#	3rd Electric
21	15'-4"	1301#	
22	16'-0"	1301#	4th Border
23	16'-8"	1301#	4th Legs
24	18'-0"	1301#	
25	18'-8"	1301#	Split Black
26	19'-4"	1301#	
27	20'-0"	1301#	
28	20'-8"	1301#	4th Electric
29	21'-4"	1301#	
30	22'-0"	1301#	
31	22'-8"	1301#	5th Border
32	23'-4"	1301#	5th Legs
33	24'-0"	1301#	Black Scrim
34	24'-8"	1301#	RP Screen
35	25'-4"	1301#	
36	26'-0"	1301#	5 th Electric - Sky Cycs
37	27'-4"	1301#	
38	28'-0"	1301#	
39	28'-8"	1301#	
40	29'-4"	1301#	
41	30'-0"	1301#	6 th Electric – Ground Row
42	30'-8"	1301#	White Bounce
43	31'-4"	1301#	Blackout Drop

SECTION FOUR: BLACK BOX THEATER

BASIC SOUND AND LIGHTS - DEFINITION

As referenced in the Center's Rental Agreement, most rental packages include "basic sound and lights". The following are definitions of these terms as they pertain to the Black Box Theater. Please use these guidelines in planning your event. Contact the Center for the Arts Production Office for details or if you have any questions.

BLACK BOX THEATER SOUND:

The nature of this space dictates that there are no permanently mounted speaker positions. Speakers may be installed as needed for each specific production. Located in the control booth is a Yamaha 01V96VCM digital console, booth monitors, equalization for four speaker sends, and additional patchable equalizers. There is program/paging to dressing rooms and common areas, and playback capability for CDs and iPods. There are 4 EAW JF100 full range speakers and 2 Bag End S-18 subs that can be placed where needed on a per-show basis. A basic compliment of up to 8 wired microphones is included. Wireless microphones are available at additional cost.

BLACK BOX THEATER LIGHTING:

The Black Box has an ETC Element 60/500 lighting console. A remote video station with 2 displays is available for use at a tech table. The system is dimmer per circuit. Due to the nature of this space, there is no house lighting plot hung. Lighting instruments are kept hung in storage positions, therefore lighting instruments must be specially hung and focused for each event that takes place in this space. All lighting equipment must be returned to its storage position during the load-out of the event. When basic lighting is included in the rental package, all of the instruments listed in this room's inventory (excluding followspots) are included.

STAGE INFO

ROOM DIMENSIONS: 47'-0" x 52'-8"

Stage floor is sprung - 1¼" pine, tongue and groove, painted black.

NO NAILS, SCREWS, OR LAG BOLTS ALLOWED WITHOUT PRIOR CONSENT OF THE CENTER'S PRODUCTION OFFICE.

GRID: Tension type walking grid at +21'-5"
Pipe grid for hanging instruments at +25'-0"

CURTAINS: 1 border 52' x 8'
1 border 52' x 3'-6"
1 border 52' x 3"-3"
2 pairs of legs 12' x 21'-6"
2 pairs of legs 4' x 13'
1 full stage black (2 panels each at 23' x 20'-6")
1 full stage black (2 panels each at 17'-10" x 23'-7")
All blacks are 25 oz. velour, sewn flat with weight and pipe pockets
1 black sharktooth scrim 50' x 21'-6"

LOADING INFO: Loading door; dimensions: 7'-0"w x 9'-6"h
Loading door access through scene shop

AUDIENCE ENTRANCE: Two entrances with light-locks

ELECTRICS

- HOUSE LIGHTS:** Grid-hung as required; controlled from stage lighting console
- Perimeter lights switched at audience entrances
- Over Grid Lighting consists of fluorescent fixtures switched at audience entrances and mezzanine
- STAGE LIGHTS:** ETC Element located in booth on mezzanine level.
108 2.4K watt dimmers
All connectors are 20-amp stage pins
- GRID CIRCUITS:** 80 2.4K circuits
Total of 20 boxes with four tails each
- MEZZANINE CIRCUITS:** 56 2.4K circuits
Total of 20 boxes with four outlets each
- FLOOR POCKETS:** Two floor pockets with four circuits each
- ROOM INVENTORY:** 6 ETC Source 4 19 degrees
20 ETC Source 4 26 degrees
24 ETC Source 4 36 degrees
22 ETC Source 4 50 degrees
24 PAR64 cans 1K
12 ETC Source 4 PARnels
6 Altman PAR56 striplights 12-cell, 4 circuits

SOUND

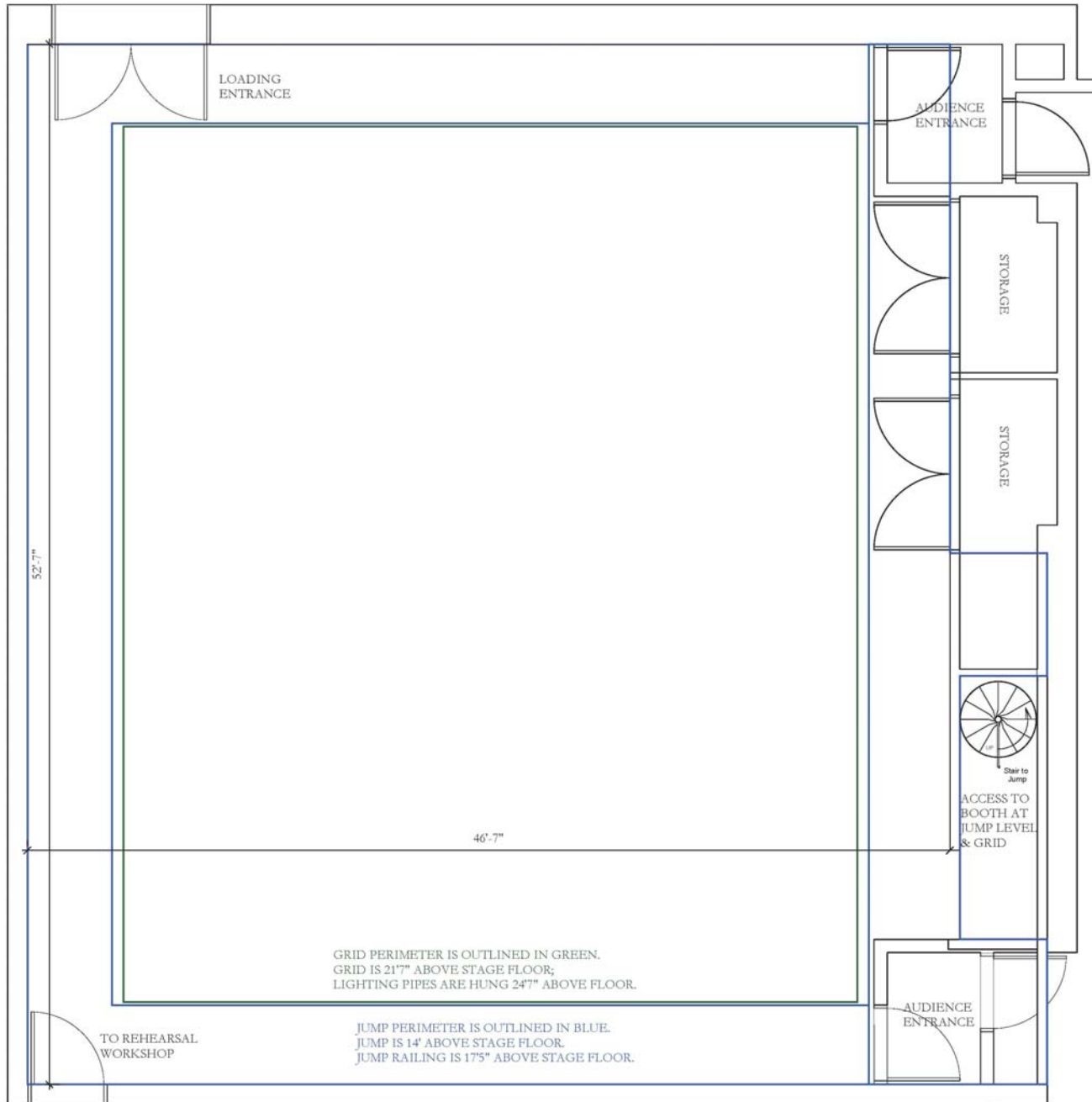
- MIXING LOCATION:** Control booth at mezzanine level
- PAGING SYSTEM:** Paging available to dressing rooms and common areas from booth.
- PROGRAM:** Program available to dressing rooms and common areas.
- COMMUNICATION:** Two channels of Clear-Com available to all Black Box Theater areas. Additional two channels available to all CFA areas

SUPPORT SPACES

- DRESSING ROOMS:** All rooms located at stage level, accessible from corridor downstage left.
Total of 7 rooms can accommodate up to 69 people.
All rooms have tables, chairs, mirrors, toilet and shower facilities, and sinks with hot and cold water.
- Touring production office (1) located at stage level
- WARDROBE:** Laundry room with washer/dryer, ironing board, iron, sewing machine, and steamer available.

Dressing rooms, production office, and wardrobe spaces are common areas. Usage will be determined by the Center's Production Manager. See Section Six for specifics.

BLACK BOX DRAWING



SECTION FIVE: SCREENING ROOM

STAGE: 25' x 8' (maximum depth) half-oval, finished oak 3' above floor level.
Lectern permanently mounted stage right

SCREEN: 19'6" x 10'6" permanently mounted (fixed) cinema screen. Throw distance from projection booth is 47'. Two motorized black velour curtains are mounted on a traveler to mask sides of screen or cover it completely.

VIDEO PROJECTION:

Video projection is available through a Barco RLM W-6 LCD projector permanently mounted in the projection booth. It is a 6000 WUXGA projector with a 1920 X 1200 native resolution. The projector's focus, size and settings are set to accommodate a wide variety of needs, and cannot be changed.

Control for the system is available from the touch screen at the stage right lectern, or in the projection booth.

The stage podium has a Blu-ray (5.1 cinema sound) and VHS player built in, A Dell computer is available at additional cost, and jacks for client provided equipment via composite video, HD15 VGA, and HDMI connections.

The projection booth has a Blu-ray player (with 5.1 cinema sound and jacks for client provided equipment via composite or component video, HD15 VGA and HDMI connections.

When using your own computer, please provide all necessary cables and adapters to connect to the system. We recommend that the user arrive prior to the start of the event to set up and thoroughly test the system to ensure a problem-free event.

AUDIO:

Voice amplification, though generally not needed, is available at the lectern with one microphone permanently mounted. Additional microphones or sound equipment may be requested when booking the event, or through the Center's production office before the day of the event.

LIGHTING:

Minimal stage lights and houselights are controlled from the rear of house and projection booth as well as through the touch screen located at the lectern.

SECTION SIX: DRESSING ROOMS, LAUNDRY, GREEN ROOMS, PRODUCTION OFFICES

The Center's Dressing Rooms, Laundry Room, Green Rooms, and Production Offices are Common Areas. As such, their usage will be determined exclusively by the Center. Every effort will be made to accommodate each production's needs. During dark days of multiple performance runs, these spaces may need to be cleared for use by other productions.

All spaces, excluding the production office, have show program and paging speakers with volume control, CATV jacks (excluding F & G), and common area intercom (Clear-Com) jacks.

ROOM A:	Dimensions: 32'-6" x 38' Capacity: 17 Full Length Mirrors: 2 Sinks: 3 Showers: 4 Handicapped Showers: 1 Toilets: 4 Handicapped Toilets: 1	ROOM D:	Dimensions: 27' x 9'-3" Capacity: 4 Full Length Mirrors: 1 Sinks: 2 Showers: 1 Toilets: 1 Telephone: 1 (VOIP)
ROOM B:	Dimensions: 16'-7" x 25' Capacity: 15 Full Length Mirrors: 2 Sinks: 3 Showers: 3 Handicapped Showers: 1 Toilets: 1 Handicapped Toilets: 1	ROOM E:	Dimensions: 27' x 9'-3" Capacity: 4 Full Length Mirrors: 1 Sinks: 2 Showers: 1 Toilets: 1 Telephone: 1 (VOIP)
ROOM C:	Dimensions: 16'-7" x 25' Capacity: 15 Full Length Mirrors: 2 Sinks: 3 Showers: 3 Handicapped Showers: 1 Toilets: 1 Handicapped Toilets: 1	ROOM F:	Dimensions: 27' x 9'-3" Capacity: 4 Full Length Mirrors: 1 Sinks: 2 Showers: 1 Toilets: 1
		ROOM G:	Dimensions: 27' x 9'-3" Capacity: 4 Full Length Mirrors: 1 Sinks: 2 Showers: 1 Toilets: 1

LAUNDRY ROOM:	Dimensions: 36'-7" x 20' Sinks: 1 Extra Capacity Washers: 3 Extra Capacity Dryers: 3 Triple Load Washers: 2 Triple Load Dryers: 2 Irons/Boards: 1 Steamers: 3
TOURING PRODUCTION OFFICE: ROOM B95	Dimensions: 8'-8"x 14'-10" Telephone Lines: 1 House (VOIP) 28" TV- Show Monitor / Campus Cable
GREEN ROOM: "Center Suite" ROOM B51	Dimensions: 21'-6' x 29' Telephone Lines: 1 House (VOIP) Fully Furnished Kitchen attached 55" TV – Show Monitor / Campus Cable
STAGE DOOR: ROOM B91A	Dimensions: 13'-6" x 15' Telephone Lines: 1 House (VOIP) 32" TV – Show Monitor / Campus Cable

SECTION SEVEN: SAFETY

For the protection of patrons, performers and staff, the University at Buffalo has absolute authority pertaining to safety and reserves the right to control and enforce safety standards and practices at all times. Unsafe equipment or procedures used by a production vendor or its crew members will not be tolerated. The University maintains the right to stop work and/or halt the event due to unsafe conditions.

ATMOSPHERIC EFFECTS:

The use of water-based foggers or hazers is permitted. The Center has two of each available to rent at an additional cost. Renters are allowed to provide their own effects, provided they have MSDS information available for any fluid used. The building's fire system must be monitored by a University Electrician at all times at an additional cost when using atmospheric effects. This is not necessary when using dry ice fog.

LIGHTING FOCUS:

The Center has two 36' and one 24' genie lifts (availability may vary). In compliance with OSHA requirements the moving of genie lifts while raised is prohibited. Please take this into consideration when determining schedule and crew requirements with the Production Manager.

FALL PROTECTION:

In compliance with OSHA standards, horizontal and vertical fall protection is required when climbing truss.

PYROTECHNICS / OPEN FLAME / COOKING:

All effects require the prior approval of the University at Buffalo Fire Safety Officer (this includes candles and incense). Cooking with electric appliances on stage is permitted as part of a show, so long as the emission of grease laden vapors is kept to a minimum. Either may require additional staff assigned solely for the purpose of fire watch backstage, and for the building's fire system to be continuously monitored by a University Electrician at an additional cost. A New York state DOL licensed pyro-technician may also be required to be onsite. Please consult the Production Manager prior to the event so that they can process the request properly.

FLYING OF PERFORMERS:

The flying of performers by experienced professional companies (Flying by Foy or ZFX, for example) is permitted. The State of New York Department of Labor may require inspection before use under section 41 "Ariel Performers". The Center for the Arts requires that a trained technician from the vendor or tour be onsite for use.

FLYING OF SCENERY:

Scenery must be constructed and rigged in a professional manner. Fire proofing certificates must be available upon request and scenery / drops are subject to inspection and testing. The Center for the Arts maintains the right not to allow the flying of scenery if deemed unsafe.

SCENE SHOP:

Please visit the following link for information:

<http://www.ubcfa.org/documents/Scene%20Shop%20Safety%20Manual.pdf>

ELECTRICAL GROUNDING:

Any electrical equipment must be grounded / bonded to its power source's ground, unless it has a UL listing of "double-insulated" or documentation stamped by a licensed PE that grounding is not required. This includes audio power, isolated ground transformers, stage power and production / TV trucks.